

# Geo-tripping in Nevada

You can visit exciting places without going far from home.

Click on links below and **start planning your next adventure!**

View on line at: <http://www.nbmj.unr.edu/ScienceEducation/Geotripping.html>

**For more information:** (775) 682-8766

## Earth Science Week field trips (Educational Series)

- E28 - [Ancient Lakes and Volcanoes near Fallon](#)
- E33 - [Turbulent Times in the Truckee Meadows](#)
- E34 - [What's Shakin' in the Neighborhood?](#)
- E37 - [Geology along America's Loneliest Highway](#)
- E38 - [Exploring East of the Summit](#)
- E39 - [Peavine Peak - Geology, Plants, and Mining History](#)
- E40 - [Fossils and Ancient Lakes](#)
- E41 - [In Search of the Right Tuff](#)
- E42 - [Get Out, Stay Out, and Stay Alive!](#)
- E43 - [The Frenchman Lake Frolic](#)
- E44 - [The Great Highway 50 Rock Tour](#)
- E45 - [Rockin' Along the River](#)
- E46 - [Taking the Pulse of the Earth](#)
- E47 - [No Child Left Inside](#)
- E48 - [Digging Deeper into the Comstock](#)
- E50 - [In Search of Tufa, Tuff, and Tough Rocks](#)



## EarthCache trips...with your GPS unit

- EC1 - [Black Rock Lava Flow](#)
- EC2 - [Cinder Cone in Clayton Valley](#)
- EC3 - [Easy Chair Crater](#)
- EC4 - [Kate Peak Lahar Deposit](#)
- EC5 - ["Nice" \(gneiss\) Rocks at Island Lake on the side of Lamolle Canyon in the Ruby Mountains, Elko Co, NV](#)
- EC6 - [McClellan Peak Basalt at Mustang](#)
- EC7 - [Moon Rocks](#)
- EC8 - [Project Faultless](#)
- EC9 - [The Mogul Landslide](#)
- EC10 - [Ventifact Ridge](#)
- EC11 - [Volcanic and Sedimentary Rocks of the Monte Cristo Range, Esmeralda County, Nevada](#)
- EC12 - [Warm Springs Mountain Dike Swarm](#)



## Geologic and natural history guidebooks...and more

- SP16 - [Geologic Tours in the Las Vegas Area: Expanded Edition with GPS Coordinates](#)
- SP19 - [Geologic and Natural History Tours in the Reno Area: Expanded Edition](#)
- SP26 - [Traveling America's Loneliest Road: A Geologic and Natural History Tour through Nevada along U.S. Hwy 50 with GPS Coordinates](#)
- SP29 - [Rocks, Gemstones, Minerals, and Fossils in Nevada](#)
- SP35 - [A Geologic and Natural History Tour through Nevada and Arizona along U.S. Highway 93 with GPS Coordinates](#)



## Links to caching information

[GeoCache](#)  
[Waymarking](#)  
[EarthCache](#)

## Topographic maps for your trip

Purchase paper topographic maps:

<http://www.nbmj.unr.edu/sales/usgs/usgs.php>

Sources for online topographic maps:

<http://store.usgs.gov> (Map Locator)

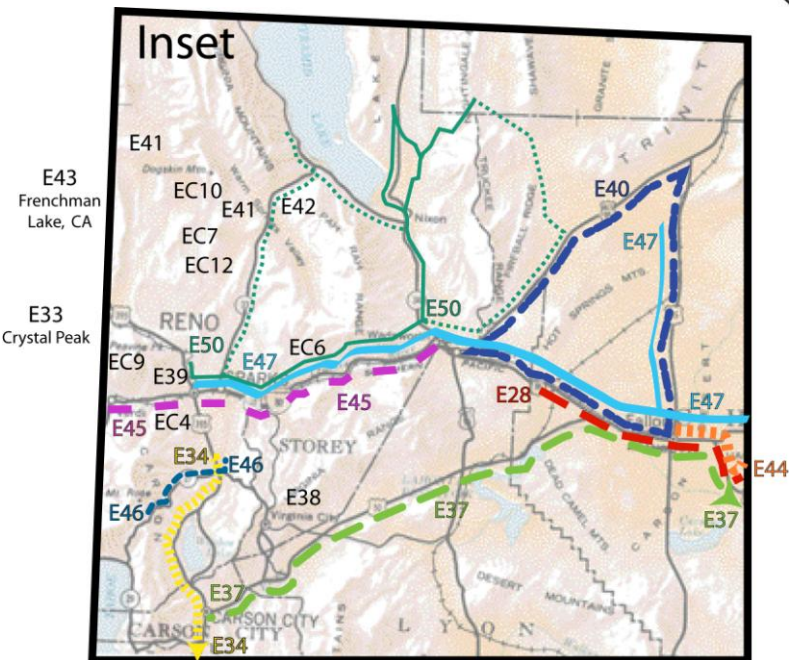
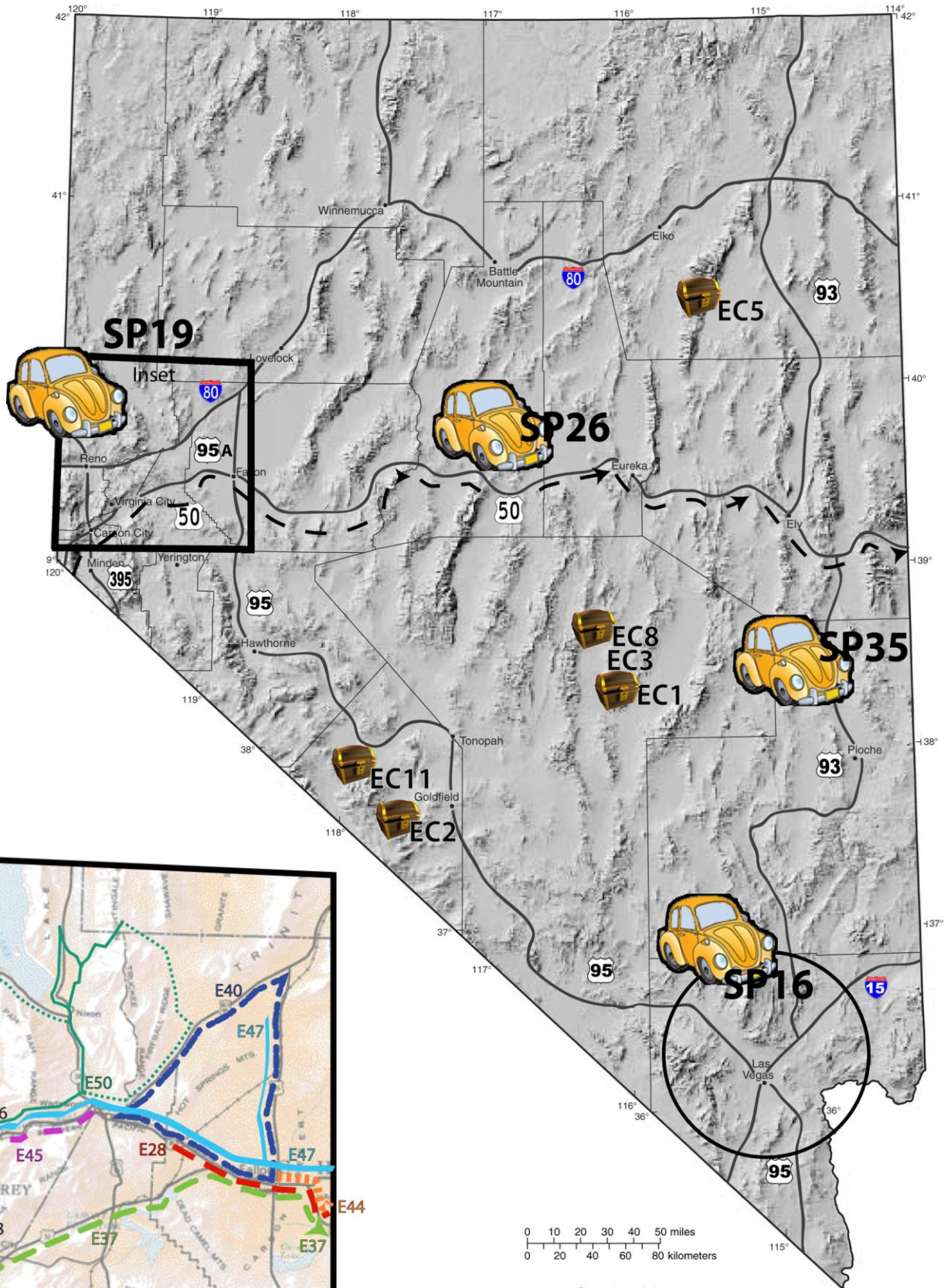
<http://keck.library.unr.edu/data/drg/drgs.html>





# Geo-tripping in Nevada Index Map

## Nevada Bureau of Mines and Geology



0 10 20 30 40 50 miles  
0 20 40 60 80 kilometers

County boundaries  
Base map: Modified from NBMG E-31  
Inset map: Modified from NBMG M71