



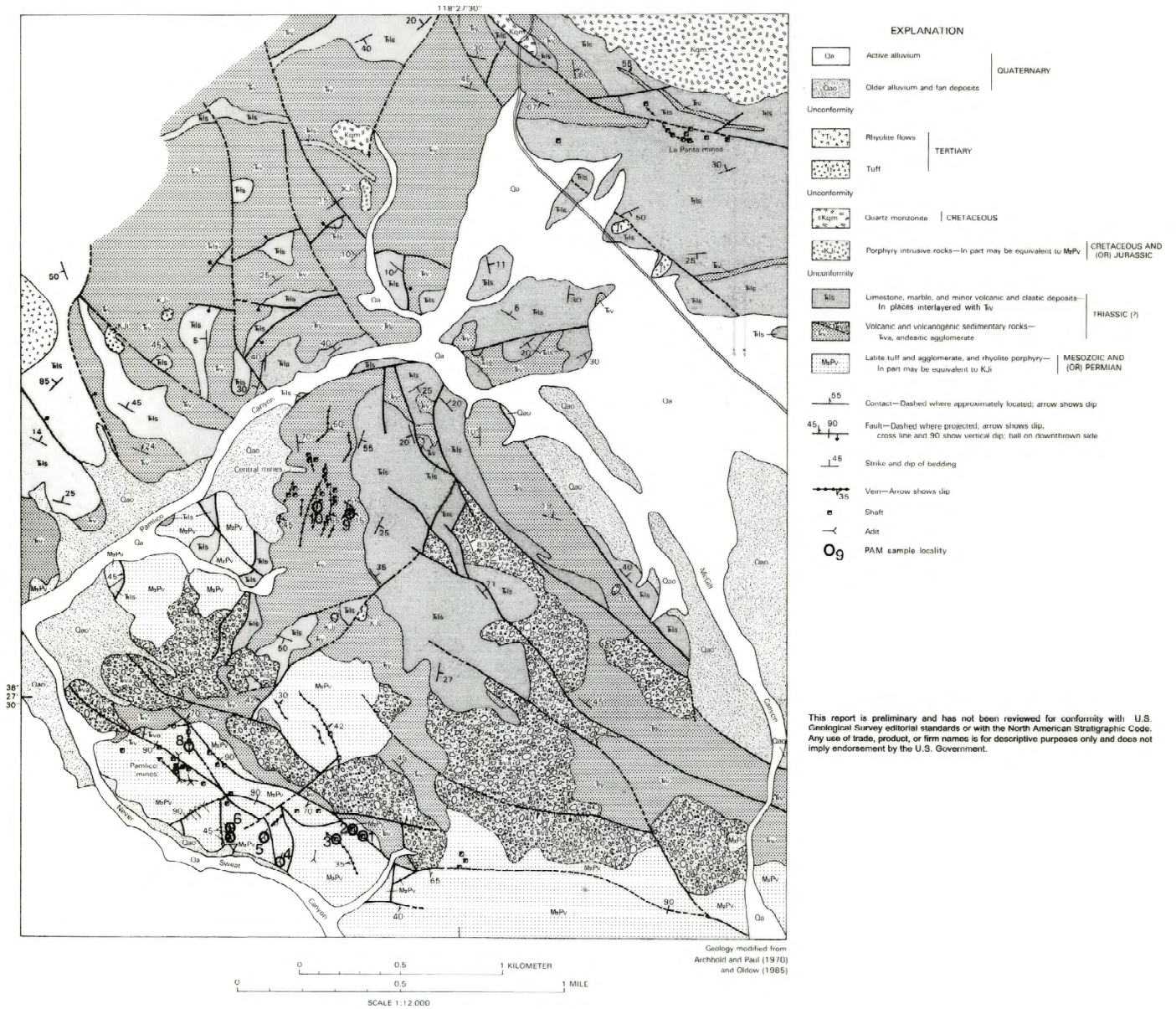
EXPLANATION		
ml	Mainmade fill	QUATERNARY
Qa3	Active alluvium in intermittent stream courses	
Qa2	Stabilized alluvium in stream courses	
Qa	Wentworthian cut and sand	
Qf	Alluvial fan material	
Qa1	High-level residual alluvium	TERTIARY
Unconformity		
Granite	Andesite and tuffe	CRETACEOUS
Unconformity		
Granite of Alum Creek (77.2 ± 2 Ma, 79.8 ± 2.4 Ma; Robinson and Kistler, 1986; Evenden and Kistler, 1970, recalculated)		CRETACEOUS AND (OR) JURASSIC
K.Jct	Diorite dikes and small plugs	
K.Jct	Granite of Cal Canyon	TRIASSIC (?)
Granite	Granite of Cary Creek (77.3 ± 2 Ma; Evenden and Kistler, 1970, recalculated)	
Unconformity		MESOZOIC AND (OR) PERMIAN
Tls	Limestone, marble, and calc. silicified limestone	
Schist and argillite		
Mesaogypsiferous and nonmesaogypsiferous		
Meta-andesite flows and breccias		
Contact	Contact - Dashed where approximately located, solid where uncertain	
80	High-angle fault - Dashed where projected, dotted where concealed, arrow shows dip	
30	Thrust fault - Dashed where projected, solid where concealed, arrow shows dip	
80 35	Strike and dip of bedding - Arrow shows plunge of lineation	
+	Strike or vertical bedding	
65	Strike and dip of foliation	
+	Strike or vertical lineation	
70	Strike and dip of shear	
+	Strike of vertical shear	
25	Plunge of fold axis	
←	Orientation of horizontal fold axis	
←	Vein - Arrow shows dip	
+	Strike of vertical vein	
●	Shaft	
←	Adit	
○	LD sample locality	

Geology by U.R. Shown
July 11-22, 1990

0 0.5 1 KILOMETER
0 0.5 1 MILE
SCALE 1:12,000

GEOLOGIC MAP OF THE LUCKY BOY MINING DISTRICT, MINERAL COUNTY, NEVADA
1996

This report is preliminary and has not been reviewed for conformity with U.S. Geological Survey editorial standards or with the North American Stratigraphic Code. Any use of trade, product, or firm names is for descriptive purposes only and does not imply endorsement by the U.S. Government.



GEOLOGIC MAP OF THE PAMLICO MINING DISTRICT, MINERAL COUNTY, NEVADA
1996

EXPLANATION

- | | | |
|---|---|------------------------------|
| | Active alluvium | QUATERNARY |
| | Older alluvium and fan deposits | |
| Unconformity | | |
| | Rhyolite flows | TERTIARY |
| | Tuft | |
| Unconformity | | |
| | Quartz monzonite | CRETACEOUS |
| | Porphyry intrusive rocks—In part may be equivalent to MpV | |
| Unconformity | | |
| | Limestone, marble, and minor volcanic and clastic deposits—
In places interlayered with tv | TRIASSIC (?) |
| | Volcanic and volcanogenic sedimentary rocks—
tva, andesitic agglomerate | |
| | Latite tuff and agglomerate, and rhyolite porphyry—
In part may be equivalent to KJ | MESOZOIC AND
(OR) PERMIAN |
| Contact—Dashed where approximately located; arrow shows dip | | |
| Fault—Dashed where projected; arrow shows dip, cross line and 90 show vertical dip; ball on downthrown side | | |
| Strike and dip of bedding | | |
| Vein—Arrow shows dip | | |
| Shaft | | |
| Adit | | |
| PAM sample locality | | |

This report is preliminary and has not been reviewed for conformity with U.S. Geological Survey editorial standards or with the North American Stratigraphic Code. Any use of trade, product, or firm names is for descriptive purposes only and does not imply endorsement by the U.S. Government.